

Karaoke King DJ Software Interface Design

These are the screens visible when launching the FREE
Karaoke King **DJ** client software from the web.

Runs on Windows & Macintosh Operating Systems

A silhouette of a person's head in profile, facing left. The head is filled with various musical notes and symbols, including treble clefs, bass clefs, and eighth notes. A faint watermark reading "shutterstock" is visible across the silhouette. The background is white with a black border.

Welcome Screen

Plays Out Of Box Intro If Never Launched
Before

LOGIN SCREEN

[WELCOME TEXT]

Username

Password

Register / Forgot Password

Login

The user either logs in or creates an account to begin using the product.

Karaoke King: Club Subscription Services

[WELCOME USERNAME]

**START A
SUBSCRIPTION**

[Subscription service Name]

[Subscription service description]

Pricing

BUY

**MODULE
SUBSCRIPTION**

[Module Name]

[Module description]

Pricing

BUY

**MODULE
SUBSCRIPTION**

[Module Name]

[Module description]

Pricing

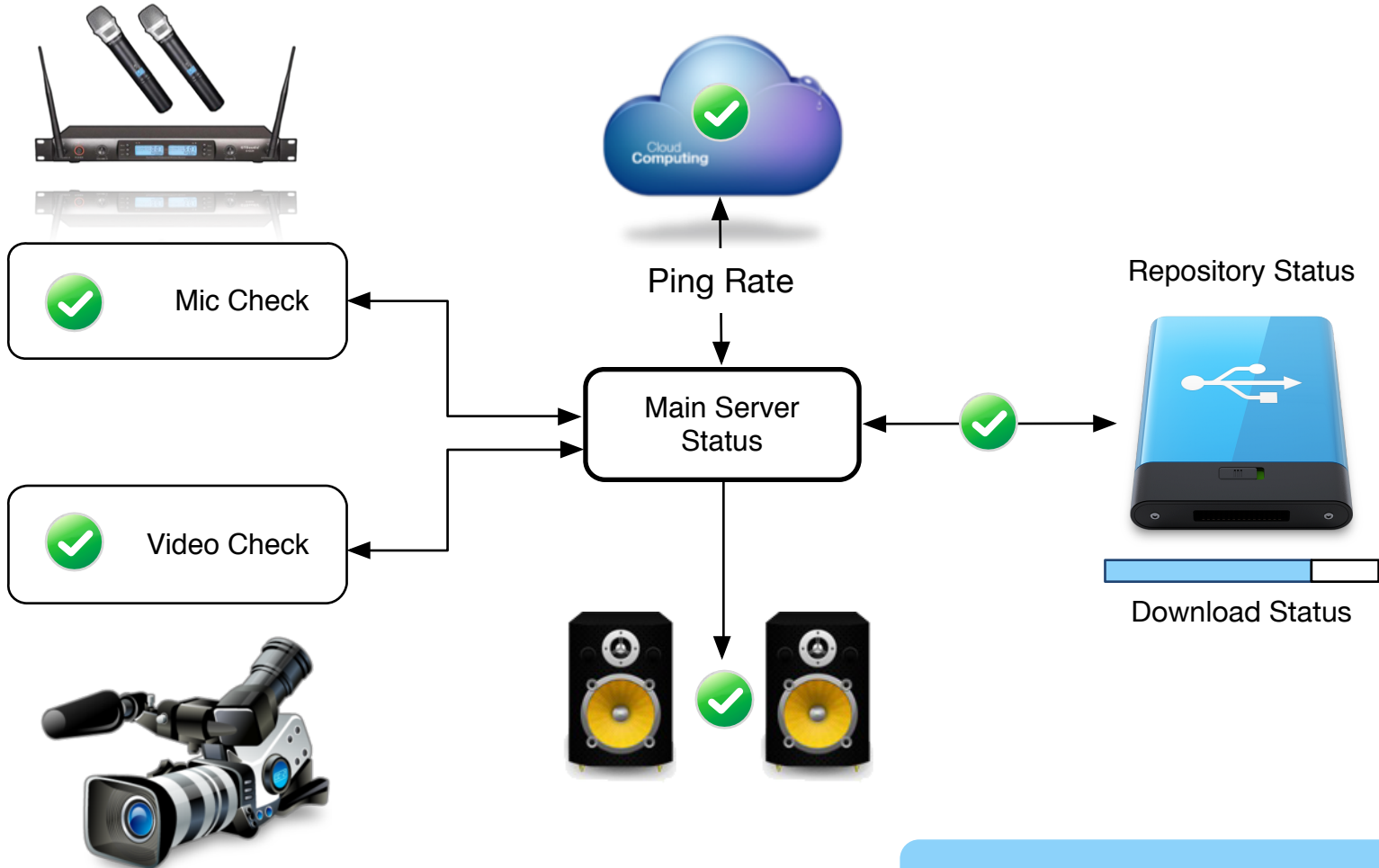
BUY

DONE

The user selects the subscription services desired and is navigated to an online commerce system for payment options. A base DJ subscription is mandatory.

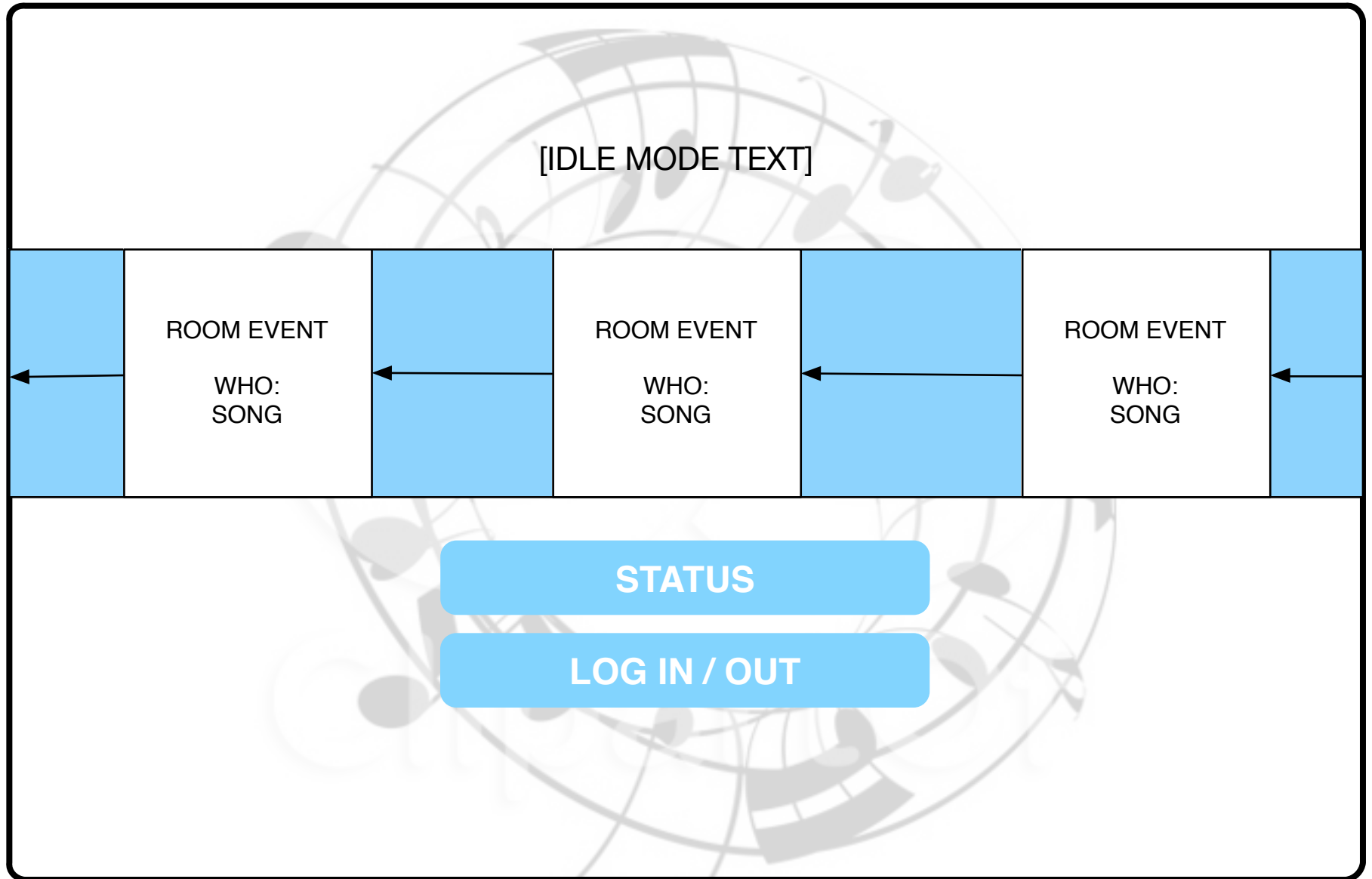
DJ Setup & Status

[USERNAME] Setup & Status



The DJ is presented with a master control dashboard to study the setup health of each component attached to the computer. From here the repository status can be monitored live.

IDLE SCREEN



This screen is an visual method of monitoring the activity of the DJ software events. This is a holding screen for when the DJ must leave their post.